

product **AS05 065R**
ER | Estrogen receptor

product information

background	The estrogen receptor (ER) is a steroid hormone receptor. This protein functions as a nuclear receptor for estrogens such as estradiol. The two different estrogen receptor proteins produced from the ESR1 and ESR2 genes are called the alpha and beta receptors. Alternative names of the protein coded by ESR1 gene: estradiol receptor, ER-alpha, nuclear receptor subfamily 3 group A member 1. Alternative names of the protein coded by ESR2 gene: nuclear receptor subfamily 3 group A member 2.
immunogen	<u>KLH</u> conjugated synthetic peptide conserved in sequences of all known ER-alpha and ER-beta including human ER-alpha <u>PO3372</u> and human ER-beta <u>Q92731</u>
antibody format	rabbit; polyclonal; affinity purified serum in PBS pH 7.4; lyophilized
quantity	100 µg - for reconstitution add 100 µl of sterile water
storage	store lyophilized/reconstituted at -20°C; once reconstituted make aliquots to avoid repeated freeze-thaw cycles. Please, remember to spin tubes briefly prior to opening them to avoid any losses that might occur from lyophilized material adhering to the cap or sides of the tubes.
tested applications	Western blot (WB)
additional information	antibody will recognize both isoforms: ER-alpha and ER-beta

application information

recommended dilution	1: 5 000 with ECL Advance (WB)
expected apparent MW	60-65 kDa
confirmed reactivity	human recombinant ER
predicted reactivity	mammals
not reactive in	no confirmed exceptions from predicted reactivity known in the moment
additional information	to be added when available
selected references	to be added when available

application example: Western blot analysis

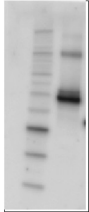


Figure description:
From the left: MW standards, human recombinant ER α and β at approximately 40 ng. Primary antibodies have been used at 1: 2 000 (ECL Advance, GE Healthcare). Secondary antibodies at 1: 50 000.
Samples were separated on 4-12 % Novex NuPAGE gels (Invitrogen) in MES SDS buffer. Transferred to a PVDF membrane, incubated for 1 hour at RT with the primary antibody, followed by a series of washes and incubation with a secondary antibody from Abcam (Cat Nr 6721). Detection using ECL Advance following manufacturers recommendation.